

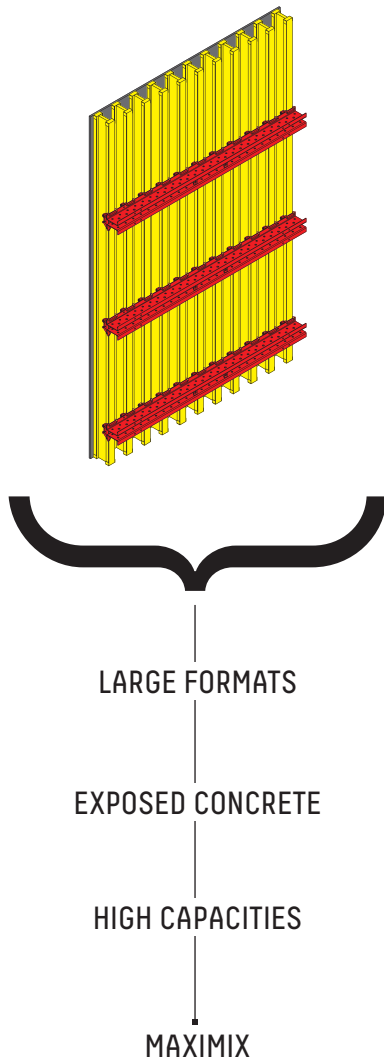


# FORMWORKS MAXIMIX

 Made in Italy







## MAXIMIX

**MAXIMIX** is a formwork system of **PL20** wooden beams that enables the construction of large sized panels and of geometrical shapes of any type, with high capacity and limited weight.

The **MAXIMIX** beam formwork system enables the system modularity, defined during the design phase, to be adapted to the various requirements of the construction site, satisfying even the most complex geometrical and architectural requirements. It is especially recommended for large infrastructure works where large surface modules can be assembled on site, maximising the site's productivity, given the large volumes to produce. In particular, the system can be designed for very high pressures of fresh cement.

Perfect for “exposed faces” using self-compacting concrete (SCC) with the option to choose cladding to meet the most stringent design specification.

**Pilosio's** technical department is available from the design phase onwards to devise the optimum use of the **MAXIMIX** depending on the requirements of the project and the problems on the construction site (equipment, casting specifications, re-use of materials, etc.) providing a detailed plan of the work phases. In addition, **Pilosio** offers the following services: assistance in starting work on the construction site, technical training of personnel and safety courses.

### APPLICATIONS

- bridges and viaducts
- major infrastructure
- containment walls
- industrial plants
- exposed concrete castings
- single-sided castings
- residential complexes



### SPECIFICATIONS

The **MAXIMIX** system is based on 3 main components: **PL20** wooden beams, beams and plywood facing.

#### PILOSIO PL20 BEAMS

**PL20** beams in fir wood, with head protected by plastic element.

Dimensions: length: 1,80, 1,95, 2,45, 2,90, 3,30, 3,60, 3,90, 4,50, 4,90, 5,90 m (some length are only on request)

#### FACING

The facing of the **MAXIMIX** system is chosen on the basis of the project specifications.

The **Pilosio** standard provides:

- Finnish birch plywood panel from 4 mm to 21 mm, protection with 220 g/m<sup>2</sup> phenolic film on both sides.
- Wisa®-Form Elephant: 18 mm multilayer panel, protective finish on both sides in 1.6 mm light grey coloured plastic, finished on both sides with water-resistant paint.

#### STEEL BEAMS

Steel walings h 10 cm in different types and sizes, from 50 cm up to 600 cm, with modular holes to allow for any type of geometry and pour pressure.

#### ACCESSORIES

The possible integration of spacer elements enables even very complex, irregular geometries.

The **MAXIMIX** formwork system is furnished with all the accessories, including service brackets, corner beams, aligners and metalwork elements to reinforce the corners, tie-rods and connecting elements.

In addition, the system works perfectly with **Pilosio's** range of auxiliary accessories: climbing support brackets, contrast beams, high capacity towers.



## STRENGTHS

- large-sized panels
- high capacities
- construction of complex shapes and geometries
- exposed architectural concrete
- design of the system depending on the required capacities
- components can be reused for other applications
- high productivity
- panels of other sizes can be combined together with the accessories provided

## ADVANTAGES OF THE MAXIMIX SYSTEM

### High productivity

With the three main components, it is possible to create panels of any size and thereby increase productivity. Even with large dimensions, **MAXIMIX** panels can easily be moved due to their limited weight.

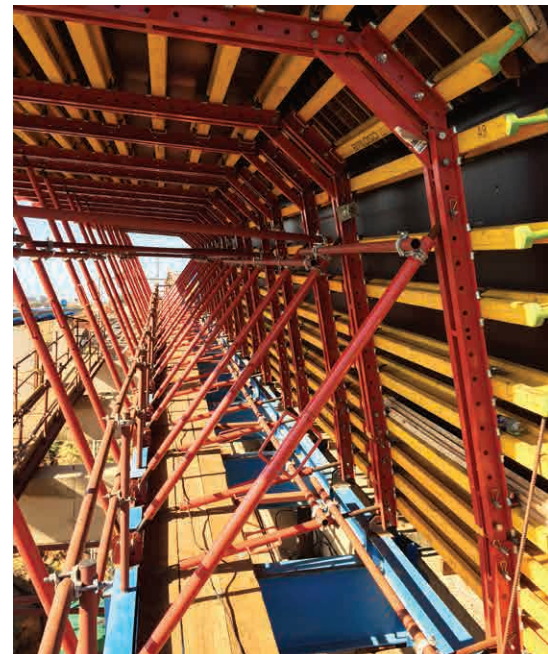
### High capacity

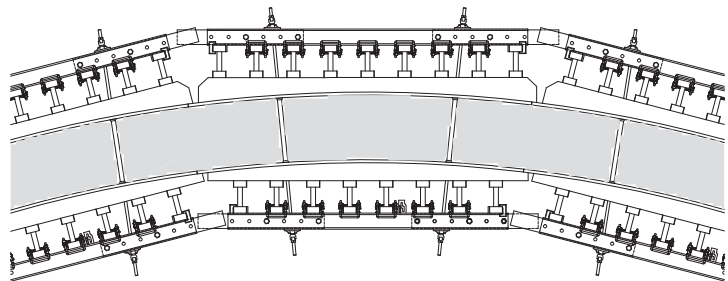
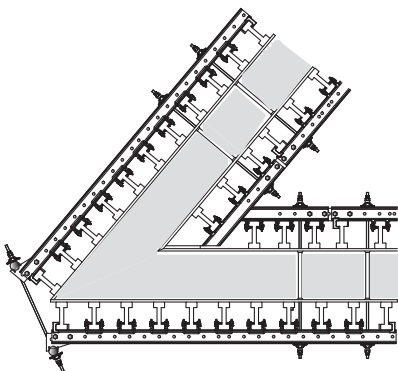
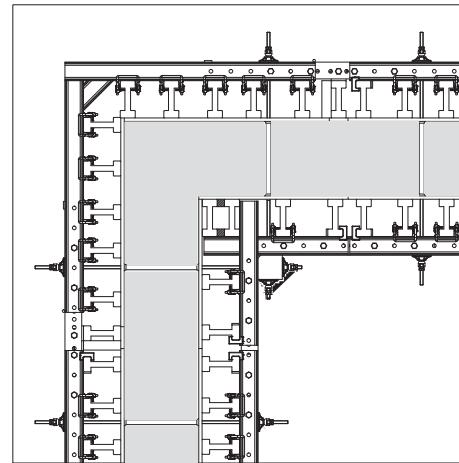
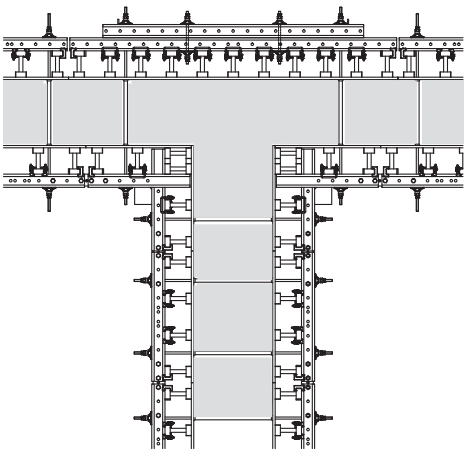
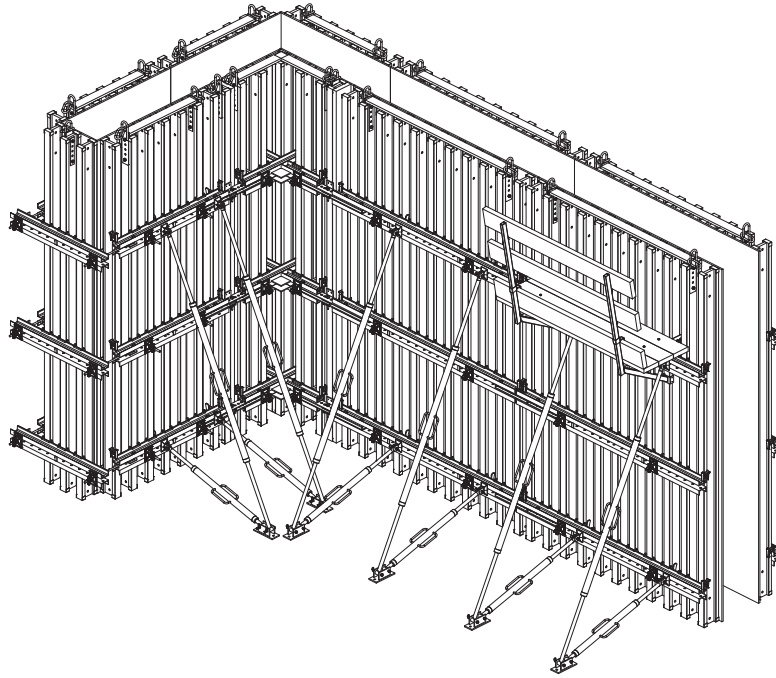
The capacity of the module can be adapted to the requirements of the project by varying the distance between the **PL20** beams and the centre distance.

### Exposed concrete

This system is perfect for the construction of exposed concrete surfaces. The quality of the surfaces very much depends on how the process is carried out, hence the fundamental importance of the assistance of **Pilosio's** technical department.

The application of special rubber moulds allows obtaining surfaces with particularly sophisticated architectural effects.







## VARIABLE SHAPES AND ANGLES

The system's accessories allows creating quickly any shape and at reduced costs.

## OVERLAYING THE PANELS

Once the required height is established, the modules can easily be overlaid using the **MAXIMIX** system accessories.

## WIDTH OF THE PANELS ACCORDING TO REQUIREMENTS

The width of the panels varies from 50cm to 600 cm. With the alignment frame, it is possible to put several panels side by side, creating very large surfaces. The frame ensures the perfect alignment of the panels.

## INSTALLATION AND CASTING ACCESSORIES

Props, Service brackets, Lifting hooks.

## PILLARS

Pillars can be made with various elements.

## SELF-COMPACTING CONCRETE

For the use of self-compacting concrete or in situations that demand it, it is possible to use casting unions, incorporated in the module, which allow connecting rapidly the concrete pump.

