

60+
SINCE 1961

DYNAMO



ENGLISH

PILOSIO

pilosio.com

PILOSIO
SCAFFOLDING & FORMWORKS

 Made in Italy

STRENGTHS

- The trailer can be towed by any vehicle
- When free, it is very easy to maneuver
- Compared with other bridge inspection machines, DYNAMO has a higher load capacity and allows creating a large working platform above and below road level which is very comfortable in case of simultaneous teams working with equipment
- The trailer is already counterweighted and there is no need to anchor the scaffolding to the surface to work on. It ensures great stability also for large scaffolding structures due to its low center of gravity.
- Any type of scaffolding can be assembled on it
- It greatly improves construction site efficiency
- The space occupied on the ground or on the roadway is equal to the dimension of the trailer.
- Made in Italy.
- Other dimension on request



DYNAMO (MANUAL MODEL)

Main characteristics:

- Stabilizer expansion - manual
 - Stabilization - manual
- Transverse displacement - manual
 - Alignment - manual
 - Translation - manual
- Length: 5 m, 6 m, 7 m, 8 m, 9 m
 - Width: 2,27 m



HIGH FLEXIBILITY

For any type of scaffolding with baseplate interlocks that adapt to the spans and dimensions of the scaffolding



SPEEDY

Speedy positioning and maneuverability



COUNTERWEIGHTED

No scaffolding anchorage needed.
Low center of gravity



PROGRESSIVE SHIFTS

Allows the use of a large working platform with progressive movement instead of building and dismantling a large scaffolding system

DYNAMO PLUS (HYDRAULIC MODEL) ON REQUEST

Main characteristics:

- Stabilizer expansion - hydraulic
 - Stabilization - hydraulic
- Transverse displacement - hydraulic
 - Alignment - hydraulic
 - Translation - manual
- Length: 5 m, 6 m, 7 m, 8 m, 9 m
 - Width: 2,27 m
- 220V power supply required



EASY TO USE

Easy to use, to move and to align to the structure



LOW COST

Both models are engine-free

DYNAMO

INNOVATIVE BALLASTED AND MOVABLE TRAILER FOR SCAFFOLDING STRUCTURES

DYNAMO is an innovative movable and ballasted platform trailer that can accommodate any type and brand of scaffolding. It allows performing quick and safe maintenance, restoration and cleaning operations on surfaces, soffits, bridges, viaducts, tunnels, and structures of any kind.

It is a platform trailer without engine with a variable counterweight as needed placed under the chassis and a platform equipped with adjustable plates for gripping the baseplates.

The Dynamo trailer is very practical and flexible because it allows creating handy large-scale work platforms or structures that follow the geometric shape of the structure and moving them as the work progresses, without dismantling and reassembling the scaffolding.

The work areas can also be created below road level with any type of multidirectional scaffolding and pitch and, above all, with whatever geometry is needed to reach the extreme points on bridges, viaducts, and tunnels and generally any work to be performed.



The trailer is equipped with parking brakes on all wheels and can be towed by any vehicle available on site, even a forklift or van.

Pilosio offers both hydraulic and manual versions:

- DYNAMO: manual version, available
- DYNAMO PLUS: hydraulic version, available
- Upon request DYNAMO can be customized according to construction site and customer's needs.

APPLICATIONS

- Road maintenance and inspections, restoration of bridge soffits, tunnels, viaducts, spandrel beams and walls.
- Renovation work, cleaning and consolidation of walls, tunnels, and cantilever structures.
- Ideal for both spot interventions and long surfaces.

DYNAMO

DYNAMO PLUS



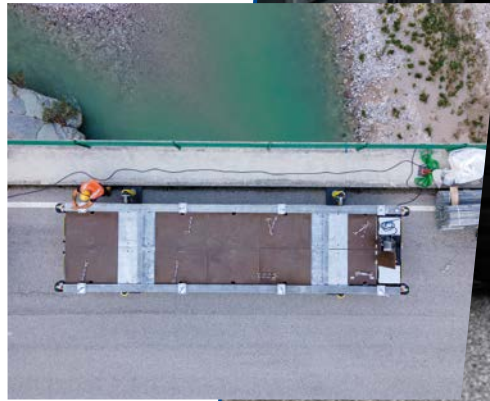


BALLAST

The ballast located on special load bodies under the platform has a very low center of gravity that ensures a high anti-tipping effect and can be made of different types of materials: prefabricated concrete blocks, sand in bags, bulk sand, cast iron counterweights, steel counterweights, liquid concrete, and more. A practical opening system ensures both filling and emptying of the load bodies.

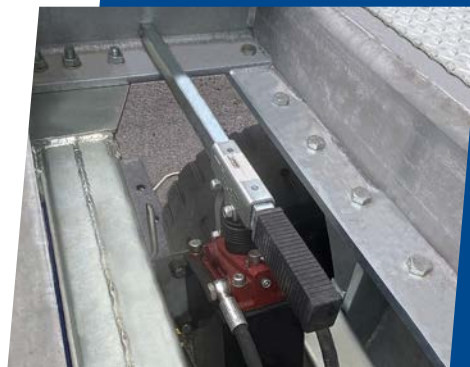
STABILIZATION

Two stabilization systems are available: a manual one via jacks for the DYNAMO model and a hydraulic one for the DYNAMO PLUS model operated by a PLC that allows the trailer to be stabilized and moved laterally to bring it closer to and aligned with the structure.



BRAKES

The trailer are equipped with parking brakes on all wheels.



DUAL STEERABLE AXLES AND DUAL STEERING RUDDERS

The double steerable axles and dual steering rudders allow the trailer to be moved in both directions and provides greater speed and synchrony of movement and alignment of the trailer to the work area.



ADJUSTABLE PLATES AND EVEN OUT

The scaffolding is assembled by clamping the base plates into the special plates that slide along rails with the advantage of being able to use any type of scaffolding and pitch. In case of sloping surfaces, the trailer is only stabilized, and the scaffolding is leveled as usual. On roads with varying slopes, the adjustable base plates of the scaffolding can be adjusted to restore leveling as usual if for the entire length of the stretch.



ALIGNMENT SYSTEM

DYNAMO PLUS: using the control panel, the operator can perfectly align the trailer to the work area.

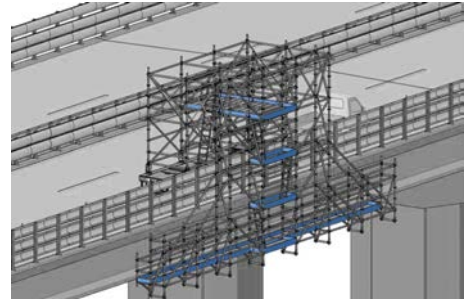
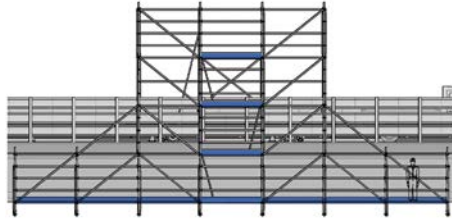
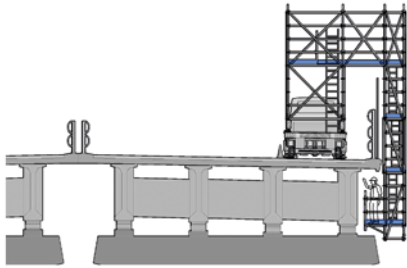
TOWING VEHICLE

The trailer can be towed by any vehicle available at the construction site.

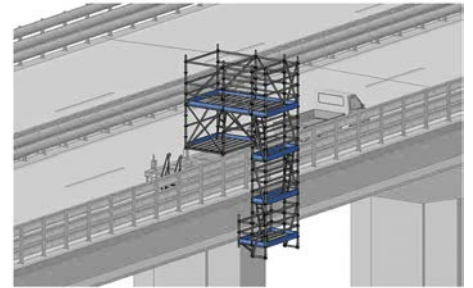
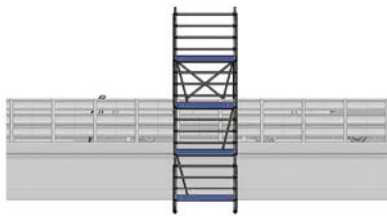
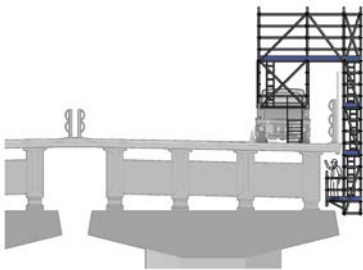


DYNAMO TRAILER APPLICATION EXAMPLES

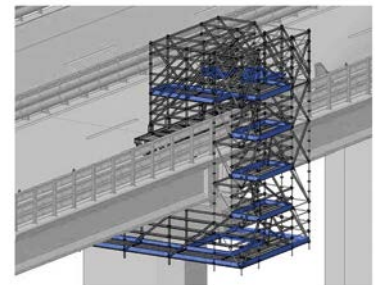
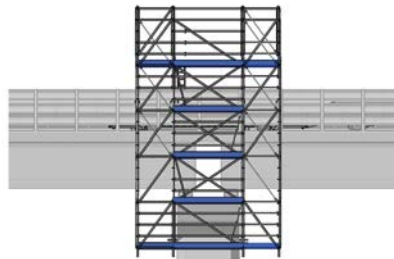
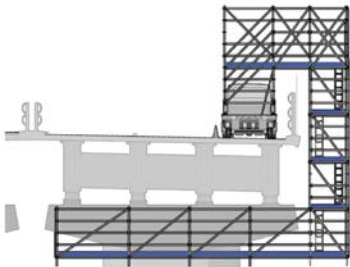
Examples of structures for maintenance, restoration and cleaning works with a DYNAMO or DYNAMO PLUS trailer. The scaffolding structure must necessarily be calculated in accordance with the regulations in force and sized in accordance with the characteristics of the trailer.



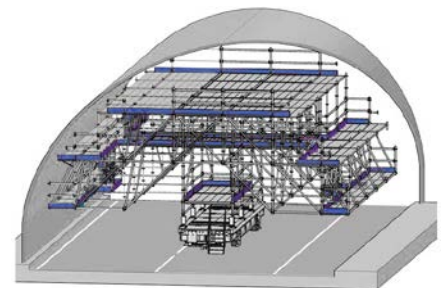
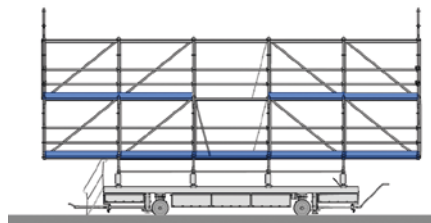
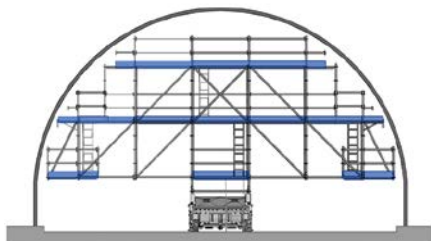
Negative working platform at 2 m below the road surface, 15.50 m long and 1.50 m wide, built with brackets for maintenance work on a bridge deck.



Structure with a small work surface, ideal for bringing it closer to the surface to be served in the case of curves with a very tight radius.



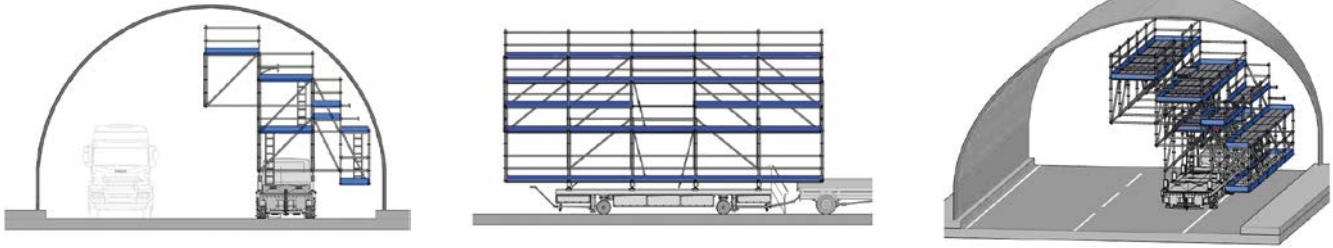
U-shaped working platform below road level embracing the pier cap, for renovation work on the pier cap and adjacent soffit. The double working platform is located 5 m below street level and extends inward by 10.50 m. The support and stiffening structure exceed the noise barrier by approximately 3 m.



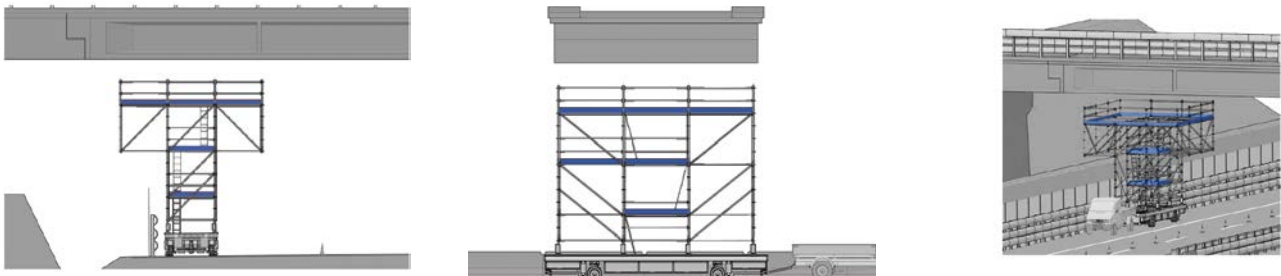
Structure with working platforms available at three different heights to reach the soffit of the entire tunnel. Overhang of 5 m per side with 12.5 m long platforms at heights of 2.4 and 6 m.

DYNAMO TRAILER APPLICATION EXAMPLES

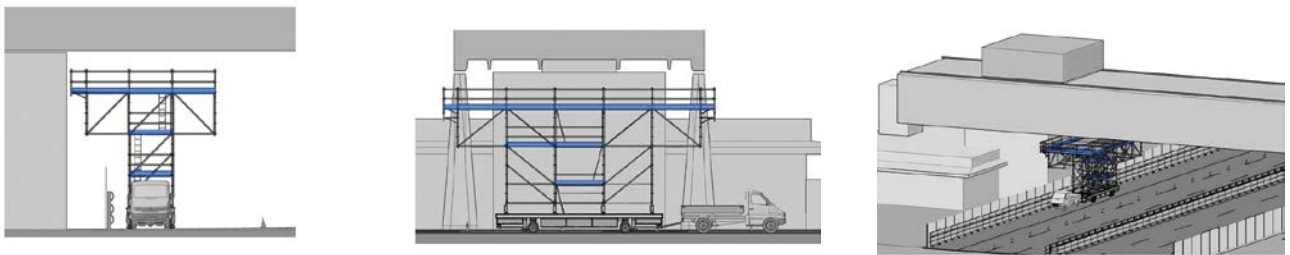
Examples of structures for maintenance, restoration and cleaning works with a DYNAMO or DYNAMO PLUS trailer. The scaffolding structure must necessarily be calculated in accordance with the regulations in force and sized in accordance with the characteristics of the trailer.



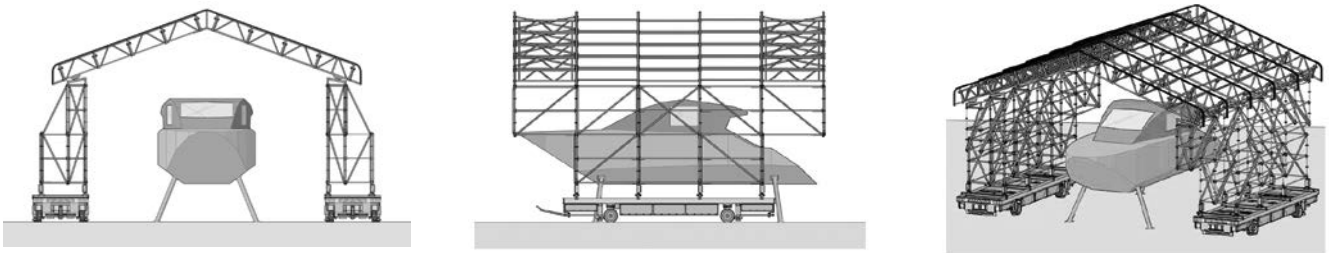
Temporary structure built to follow the shape of the tunnel and to occupy only one lane. This 12.5 m long structure allows working at five different heights.



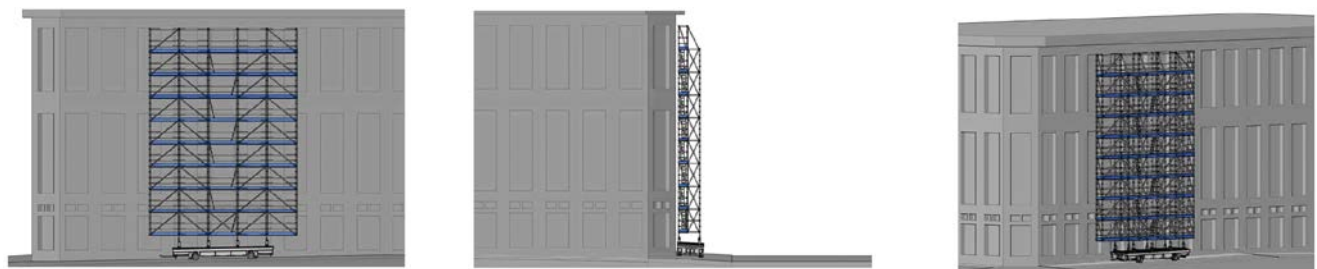
Large working platform for viaduct decks maintenance occupying only the space of the emergency lane. At a height of 6.50 m the platform is 6 x 7.50 m.



A structure similar to the previous one, with an extended work surface made of cantilevered elements and brackets.



Temporary aluminum roof fixed on two multidirectional walls placed on two parallel Dynamo trailer.



Self-supporting façade scaffolding for short maintenance operations with the last working platform at a height of 20.00 m and a length of 12.50 m.

PILOSIO
PONTEGGI E CASSEFORME



PILOSIO
PONTEGGI E CASSEFORME

Pilosio Srl - Via E. Fermi, 45 - 33010 Feletto Umberto - Tavagnacco (UD) - Italy
Tel. +39 0432 435311 - www.pilosio.com - info@pilosio.com