

60+
SINCE 1961

FLASH 2.2.1.
HYBRID
ALUMINUM 150/300kg/m²



ENGLISH

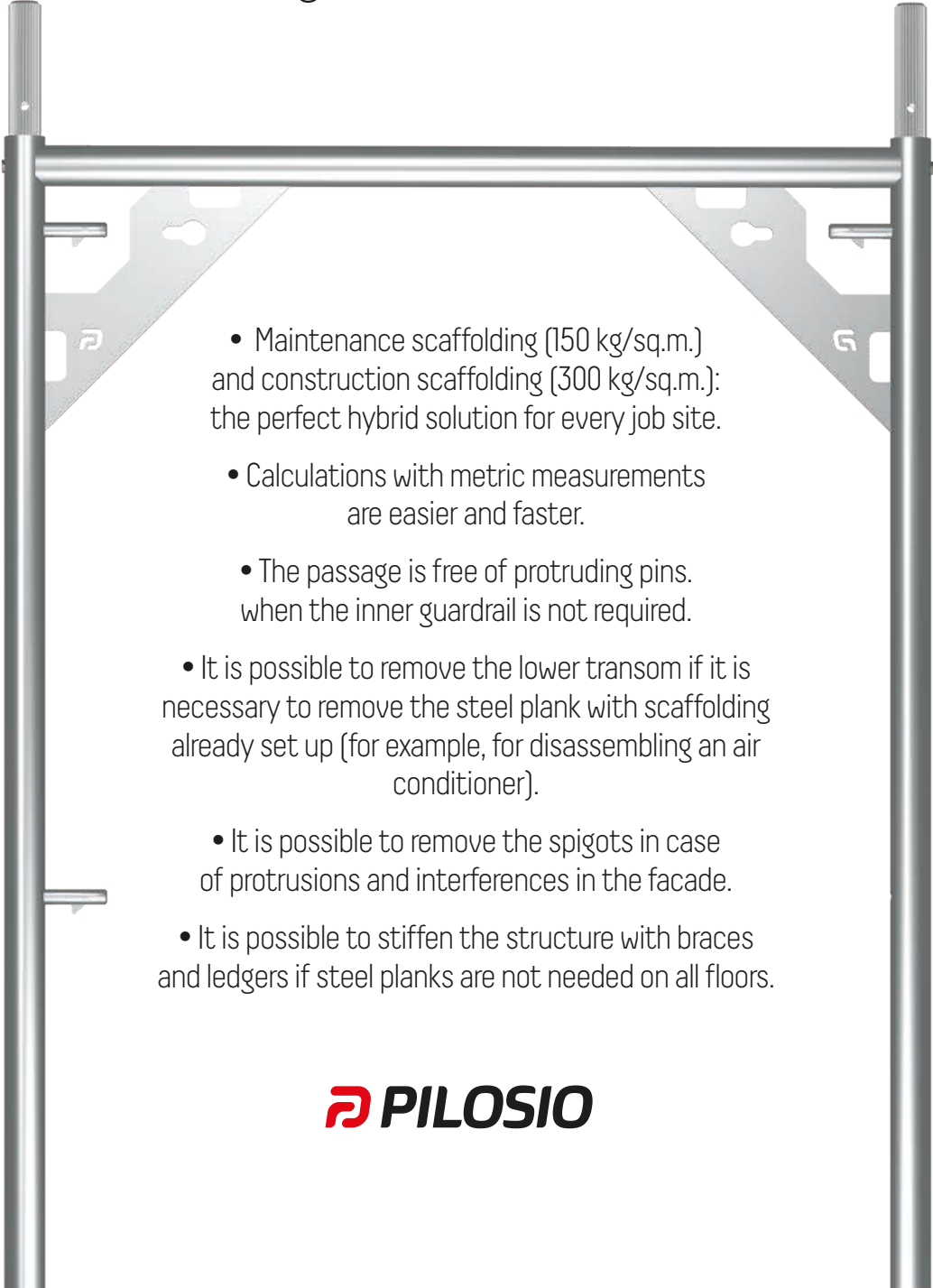
PILOSIO
SCAFFOLDING & FORMWORKS

 Made in Italy

FLASH **2.2.1.** HYBRID 150/300kg/m²

THE NEW 105 ALUMINUM HYBRID SCAFFOLDING FOR CONSTRUCTION AND MAINTENANCE WORKS

FLASH 2.2.1. HYBRID is an innovative frame scaffolding that meets the most frequent needs with logical and intuitive solutions:

- 
- Maintenance scaffolding (150 kg/sq.m.) and construction scaffolding (300 kg/sq.m.): the perfect hybrid solution for every job site.
 - Calculations with metric measurements are easier and faster.
 - The passage is free of protruding pins when the inner guardrail is not required.
 - It is possible to remove the lower transom if it is necessary to remove the steel plank with scaffolding already set up (for example, for disassembling an air conditioner).
 - It is possible to remove the spigots in case of protrusions and interferences in the facade.
 - It is possible to stiffen the structure with braces and ledgers if steel planks are not needed on all floors.

THE SCAFFOLDING OF THE FUTURE!

HYBRID

A hybrid maintenance and construction scaffolding with a capacity of 300 kg/sq.m. up to a work height of 12 meters and 150 kg/sq.m. up to a work height of 22 meters

LIGHTWEIGHT

Lightweight and easy to handle aluminum frames that can be carried on the shoulder, halving the effort and time required for assembly and disassembly

Frame h=200 cm 10 kg
frame h=100 cm 6,9 kg

SAVINGS

The light weight of the aluminum frame also reduces transportation costs

SPECIAL ALLOY

The EN AW 6082 T6 special aluminum alloy has high mechanical characteristics

DOUBLE GUARDRAIL

Steel or aluminum double guardrail

REMOVABLE SPIGOT

The removable aluminum spigot facilitates assembly in case of interference on facades

HORIZONTAL BRACE

Horizontal braces can replace the use of steel planks

ANCHORAGE

Holes for fastening of the anchoring couplers

WALL SIDE GUARDRAIL

Features references on the frame for the proper connecting position of the wall side guardrail

REMOVABLE TRANSOM

Removable lower transom

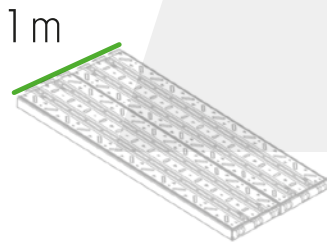
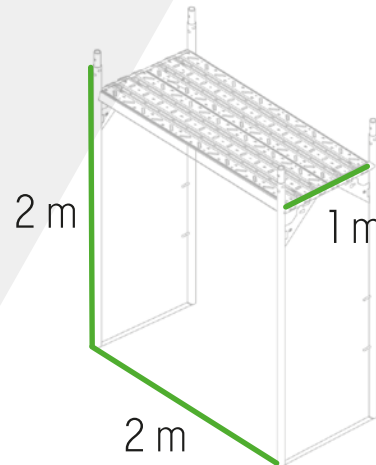


* The heights quoted refer to standard configurations and may be increased by adopting appropriate supplementary systems with calculation report

WHAT MAKES THE INNOVATIVE HYBRID 2.2.1 FLASH SCAFFOLDING DIFFERENT FROM ALL OTHERS:

METRIC MODULARITY

Compared with most scaffolds, the HYBRID FLASH 2.2.1 features metric modularity, with the 2-meter pitch, which greatly simplifies the calculation of spans and decreases the number of pieces to handle.



1-METER WORK SURFACE

Compared to aluminum scaffolding, HYBRID FLASH 2.2.1 offers a much wider and more comfortable work surface than the ones available on the market, thanks to its high-performance aluminum alloy.

HYBRID

Even if it features an aluminum frame, HYBRID FLASH 2.2.1 HYBRID can also be used as a construction scaffolding with a guaranteed load capacity of 300 kg/sq.m. up to a work height of 12 meters and 150 kg/sq.m. up to a work height of 22 meters. This scaffolding allows companies and renters to optimize equipment for multiple interventions.





150kg/m²



300kg/m²

HYBRID



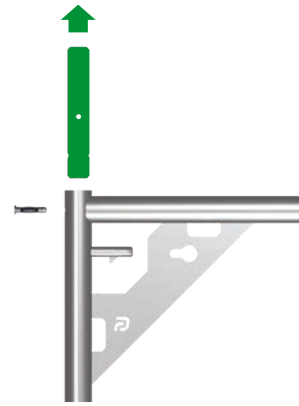
**FAST
LIGHT
ALUMINIUM
SCAFFOLDING
HYBRID.**



REMOVABLE SPIGOT

The spigots often prevent handling the frame under eaves, ledges, or balconies efficiently. Removing the spigot makes the frame less bulky when loading and storing.

The removable spigot is made of aluminum with a spring pin for quick removal without using tools.

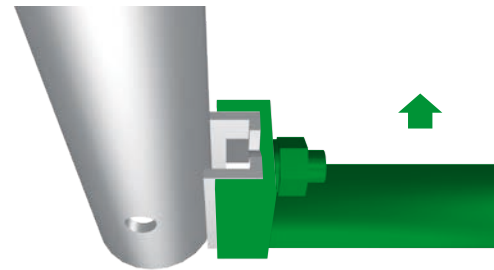
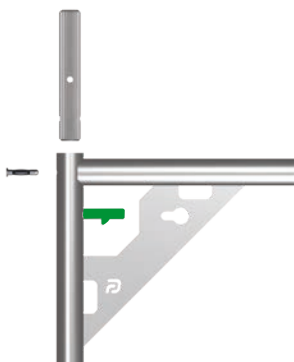


MOBILE PINS FOR WALL SIDE GUARDRAIL

The wall side guardrail is not always required, and the presence of spring pins on the inner side of the frame can hinder the passage of workers during the various work stages. The HYBRID FLASH 2.2.1 frame has mobile pins that are used only when it is necessary to assemble the wall side guardrail. The frame has references to position the guardrail at the height required by regulations.

REMOVABLE LOWER TRANSOM

The aluminum frame of the Hybrid FLASH 2.2.1 was designed and sized so that the lower transom can be removed when needed. This feature is handy at the job site because it allows the steel planks to be easily removed even when the scaffolding is already set up (for example, when an air conditioner needs to be disassembled and reassembled or to carry out facade restoration works). In addition, by disassembling the transoms of the ground frames, an obstacle-free walkway is obtained.



HORIZONTAL BRACE

An horizontal brace is required to reinforce the scaffolding when there are no steel planks, which is a considerable advantage when work surfaces are unnecessary.

SPECIAL ALLOY

The EN AW 6082 T6 aluminum special alloy has high mechanical characteristics. The frames are lightweight and thus easier to handle than steel scaffolding.





FLASH 2.2.1. HYBRID 150/300kg/m²

TECHNICAL CHARACTERISTICS

- Frame dimensions 100 x h 200 cm, 10 kg
- 200 cm pitch
- EN AW 6082 T6 aluminum alloy
- Capacity Class 2: 150 kg/sq.m. (up to 22 m of work height); Class 4: 300 kg/sq.m. (up to 12 m of work height). These are heights for standard configurations that can be increased by adopting appropriate supplementary systems provided with related calculation reports.
- Double steel guardrail
- 50x200 cm steel planks
- Steel plank with trapdoor 50x200 cm and ladder
- Steel ledger and brace
- Removable knurled aluminum spigot with \varnothing 10 mm spring pin
- Removable pin for wall side guardrail
- Removable lower frame transom
- Toe-board 15 cm high in galvanized steel
- Certified according to UNI EN 12810-1:2004 and 12811-1:2004

SYSTEM ACCESSORIES

- 0.5 and 1 m half frame
- 55 cm narrow start frame and 55/105 cm frame
- 55 and 105 cm bracket
- 2 m ledger
- Double aluminum guard rail
- Horizontal steel brace
- Vertical steel brace
- 2 m single ledger
- 4 m Lattice beams
- 1.50 m Protection fan



PILOSIO
PONTEGGI E CASSEFORME



PILOSIO
SCAFFOLDING & FORMWORKS

Pilosio Srl - Via E. Fermi, 45 - 33010 Feletto Umberto - Tavagnacco (UD) - Italy
- Tel. +39 0432 435311 - www.pilosio.com - info@pilosio.com