

**60+**  
SINCE 1961

# GENERAL CATALOG



ENGLISH

**PILOSIO**  
SCAFFOLDING & FORMWORKS

 Made in Italy

MP, PE, PLA and FLASH 2.2.1. HYBRID scaffolding systems are certified according to EN 12810-1:2004 and EN 12811-1:2004.  
K, PE, MP, PLA, T&C, SE scaffolding systems are certified according to Italian regulations Autorizzazioni Ministeriali.

# INDEX

Pilosio: a brand in evolution	pag.	04
Services	pag.	05
<b>SCAFFOLDING</b>		
MP	pag.	06
MP STAIRWAYS	pag.	06
BUILDING ROOFS	pag.	06
PE	pag.	07
K	pag.	07
SE	pag.	07
PLA	pag.	08
FLASH 2.2.1. HYBRID	pag.	08
T&G	pag.	08
<b>TORRI MOBILI</b>		
QUICK SYSTEM	pag.	09
BLIZ	pag.	09
<b>SCAFFOLDING ACCESSORIES</b>		
FLYDECK system	pag.	10
FLYRAIL guide	pag.	10
SECUR-BLIND	pag.	10
DYNAMO and DYNAMO PLUS trailer	pag.	11
FLY 105 extension bracket system	pag.	11
<b>VERTICAL CLIMBING SOLUTIONS</b>		
Mast climbing work platforms	pag.	12
Construction hoists	pag.	13
Transport platforms	pag.	13
<b>VERTICAL FORMWORKS</b>		
MINIMAG	pag.	14
P300	pag.	14
MAGNUM 2.0	pag.	14
SVELT	pag.	14
MAXIMIX	pag.	15
Special applications	pag.	15
Single side	pag.	15
Shaft platform	pag.	15
Climbing brackets	pag.	15
<b>HORIZONTAL FORMWORKS</b>		
SLABFORM 2.0	pag.	16
LINEAR	pag.	16
ST50	pag.	16
ST80	pag.	16
MP support structures	pag.	17
MP HD towers	pag.	17
SIMPLEX HD	pag.	17
<b>TRENCH LINING</b>		
BOX SICURO	pag.	17
<b>ENTERTAINMENT</b>		
Stage	pag.	18
Grandstands and bleachers	pag.	18
Sound and light towers	pag.	18
T74 T110 EVENT roofs	pag.	18





## PILOSIO ABOUT

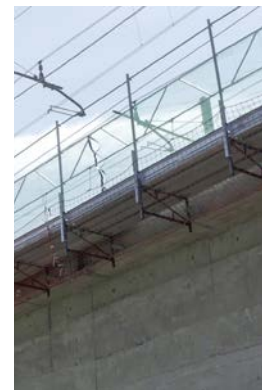
### A BRAND IN EVOLUTION

Pilosio is a historical Friuli-based company founded in 1961 specialized in the manufacturing of scaffolding, formworks and shoring products for construction and maintenance applications in the construction, infrastructure, Oil&Gas and entertainment sectors. Following a recent corporate restructuring in September 2021 and a significant recapitalization, Pilosio confirmed its commitment to offering complete services, excellent customer care and technical support to its customers. Dedicated to constant improvement, the Company continues to pursue the values that have always made it stand out: passion, quality, innovation, and attention to detail.

Recently, the product lines have been expanded to integrate complementary equipment such as:

- ▶ THE INNOVATIVE AND PATENTED **FLYDECK** INTRADOS SYSTEM that makes the installation of suspended structures safer and easier;
- ▶ THE **FLYRAIL** guide for a quick and easy fitting, including wrap-arounds for piles and dossierets.
- ▶ THE **DYNAMO** trailer, a ballasted and movable trailer for any type of scaffolding ideal when fast restorations on bridges, viaducts and tunnels are required;
- ▶ THE **SECUR-BLIND** PROTECTION SYSTEM, an innovative, visually appealing and easy to use protection for any construction site, simple to adapt to any preset structure.
- ▶ THE **FLY 105** BRACKET SYSTEM, a cantilevered bracket system to perform maintenance work on the curb edge beams of bridges and viaducts and construction works in general.

More than 60 years of Pilosio professional experience bear witness to the winning choices of the Company: constant investments in product R&D, manufacturing plants, quality selection of raw materials and staff at every levels. Pilosio is known worldwide as a reliable and accurate partner for the ability to ensure to its customers the design and manufacturing of highly efficient solutions for any need.



# SERVICES

To offer full support to its customers, Pilosio makes available a full range of services including:

- ▶ Commercial and technical support
- ▶ Design consultancy to choose the optimal equipment
- ▶ Technical reports, structural reports, design of special configurations
- ▶ Design and manufacturing of special elements
- ▶ Assembly and disassembly on site performed by trained and qualified Pilosio technicians
- ▶ Installation consulting services for the entertainment sector
- ▶ PONCAD: design software with a database of Pilosio products
- ▶ Leasing and financial options in cooperation with our partners





# SCAFFOLDING

## MP

Modular multidirectional scaffolding in hot-galvanized steel designed to address standard, complex and particularly challenging situations.

The wedge connection ensures fast, accurate and fully safe assembly. The system is suitable for any use and sectors such as constructions, renovations, viaducts, industrial maintenance, shipyards, entertainment applications, and more.



GALVANIZED

## MP STAIRWAYS

A variety of ladder towers manufactured using MP multidirectional scaffolding perfect to pair with any scaffolding and formworks:

- Service stairs in aluminum (150x250 cm ramp - Fig. 1)
- Job site emergency stairs (250x200 cm ramp - Fig. 2)
- Public access stairs (250x150 cm ramp - Fig. 3)



Fig.1



Fig.2



Fig.3

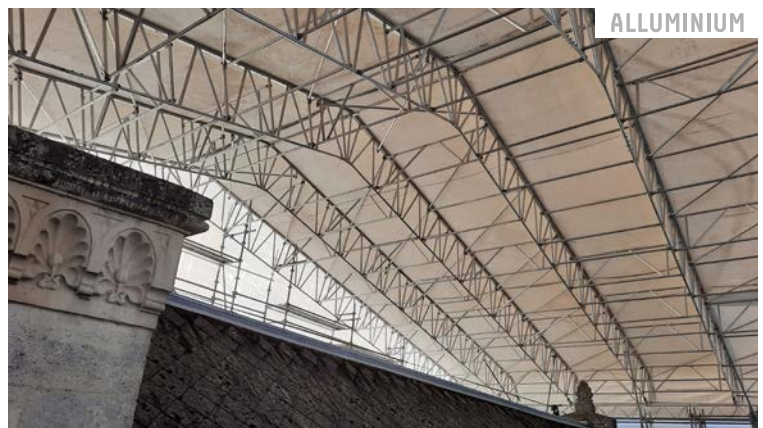
GALVANIZED

## BUILDING ROOFS

Temporary aluminum double-pitch roofs for job site protection.

Modular reticular structure with 74, 76, and 120 cm beams and double ledgers and braces with quick-connect system. PVC tarpaulin.

It can be moved by crane and can slide on rails to optimize work at the job site. Slope angle 15° or 27.5° (T76).



ALLUMINIUM

Span

200/250 cm





## PE

Hot galvanized steel frame scaffolding with bushings, suitable for traditional construction work and also for complex situations thanks to the wide range of accessories available. Easy and intuitive to assemble. Available in two models: PE72 and PE105 with spans of different sizes.

Span	180 cm
Max. load	300 kg/m <sup>2</sup>



GALVANIZED



GALVANIZED

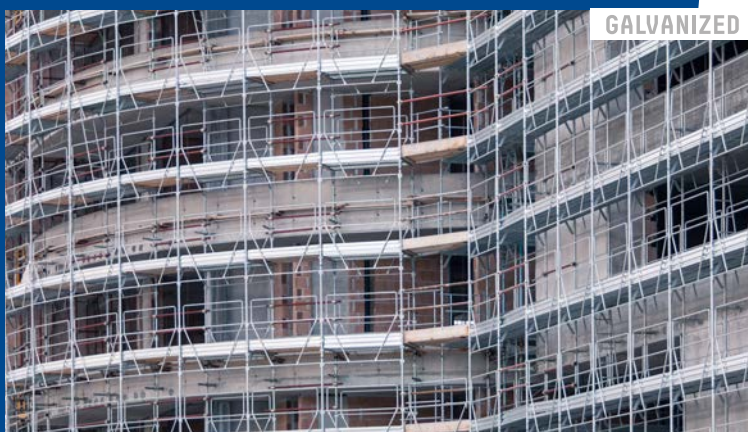


GALVANIZED

## K

Prefabricated scaffolding with hot-galvanized pins and double railing ledger. Quick and easy to assemble and move, particularly suitable for construction and maintenance works on facades and as a service scaffolding on job sites.

Span	180 cm
Max. load	300 kg/m <sup>2</sup>



GALVANIZED

## SE

A scaffolding system with galvanized steel frame designed for maintenance work that successfully solves safety issues at the job site. The rail is assembled on the lower work surface and provides maximum safety when the operator climbs to the upper level since the surface is already protected against accidental falls. It allows working without having to wear fall-protection PPE (3rd level). Width 105.

Span	180 cm
Max. load	150 kg/m <sup>2</sup>





## PLA

A lightweight aluminum scaffolding system specifically designed for maintenance and renovation works. Particularly easy to handle and quick to assemble.

The system features a few modular components and comes with all the necessary accessories.

Span	200 e 250 cm
Max. load	150 kg/m <sup>2</sup>



## FLASH 2.2.1. HYBRID

A hybrid scaffolding system designed for maintenance and construction work, featuring a lightweight aluminum frame made of a special high-performance alloy.

FLASH 2.2.1. HYBRID stands for Fast Light Aluminum Scaffolding Hybrid.

It is a scaffolding system featuring a lightweight pin frame, with 1-meter wide by 2-meter-high aluminum frame and 2-meter pitch, with double steel guardrail and steel planks.

This scaffolding guarantees a work height of 12 meters with a capacity of 300 kg/sq.m. and 150 kg/sq.m. for a work height up to 22 meters.

Frame h=200 cm 10 kg.

Span	200 cm	
Max. load	Construction	Maintenance
	300 kg/m <sup>2</sup>	150 kg/m <sup>2</sup>

The height can be increased by adopting adequate supplementary systems accompanied by a calculation report.

## T&G

Tube and coupler scaffolding system Different types of couplers, including EN 74-1, allow to create any geometry, as desired. Suitable for complex and nonlinear works.

It can be used to create special connections and structures with all types of framework and multidirectional scaffolding systems.





# MOBILE TOWERS

## QUICK SYSTEM

Movable and modular aluminum tower, extremely stable and easy to assemble thanks to a special hooking.

It allows creating complex structures and special compositions. A work surface every 50 or 25 cm.

For renovations, industrial maintenance, and general plant engineering, both indoor and outdoor.

Width	80/110/140 cm
Span	180/240/300 cm



## BLIZ

Mobile steel tower for any type of outdoor and indoor maintenance. Very sturdy and stable with a 2x2m work surface platform.

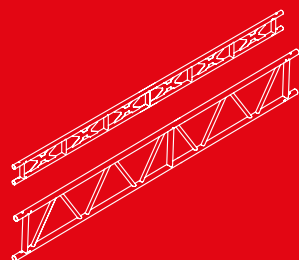
The structure consists of overlapping sides stiffened by the reticular parapets, quick and intuitive to assemble. It can reach a maximum height of 13.10 meters.

Base dimension	120 x 200 cm
----------------	--------------



# SCAFFOLDING ACCESSORIES

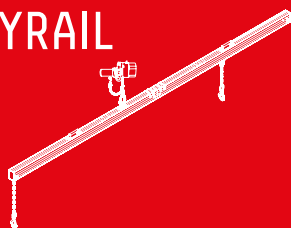
## FLYDECK



A modular temporary structure for working on the soffits of bridges, viaducts and tunnels. Safe, practical, fast and of minimal visual impact.

Capacity 150 kg/sq.m. with tie-rods every 6 sq.m. and capacity 300 kg/sq.m. with tie-rods every 4 sq.m.. Additional capacity can be achieved by increasing the number of tie-rods. The FLYDECK system is a patented and certified intrados work surface.

## GUIDA FLYRAIL



An unprecedented and revolutionary guide to wrap-around piles and dossierets and continue the suspended structure into the subsequent span without the need to use other support means thus without occupying roadway and railway space.



NEW



## SECUR-BLIND

An innovative, safe, and easy-to-use protection for job sites consisting of blind or meshed panels and aluminum rails that can be fastened to the scaffolding or any tubular structure with a clamp.

It is modular, flexible, quick to assemble, equipped with corner profiles and access gates, and greatly enhances the aesthetics of the job site. A fire-retardant, soundproof, and airtight version is also available.



NEW



### Panels dimension

Height	50 cm
Width	100/150/180/200/250 cm



## DYNAMO AND DYNAMO PLUS TRAILER

An innovative ballasted and movable trailer that can accommodate any type of scaffolding. It allows scaffolding structures to be moved quickly without disassembling and reassembling them, optimizing the work stages and improving efficiency at the job site with special attention paid to the operator's safety. It is an ideal system for maintenance work on long areas such as bridges, viaducts, tunnels, underpasses, and more because large surface platforms can be set up. Very handy, it can be moved by any vehicle available at the job site.

DYNAMO - manual version	
DYNAMO PLUS - hydraulic version	
Widths	5 m, 6 m, 7 m, 8 m, 9 m
Length	2,27 m

OTHER DIMENSIONS ON REQUEST



## FLY 105 BRACKET SYSTEM

A cantilevered bracket system to perform maintenance work on the curb edge beams of bridges and viaducts and on the roofs and cornices of buildings. The forward moving assembly consisting of a walkway that slides between the brackets and provides a temporary support surface for the operator while fixing the next bracket to the wall. The system comes with movable and fixed guardrails.



# VERTICAL CLIMBING SOLUTIONS

## MAST CLIMBING WORK PLATFORM

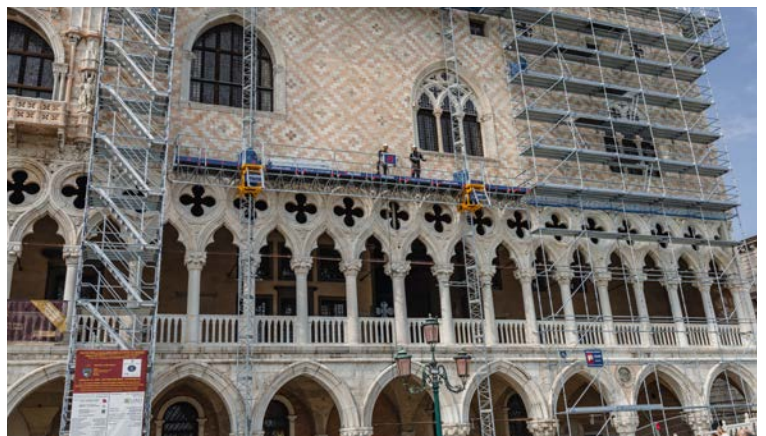
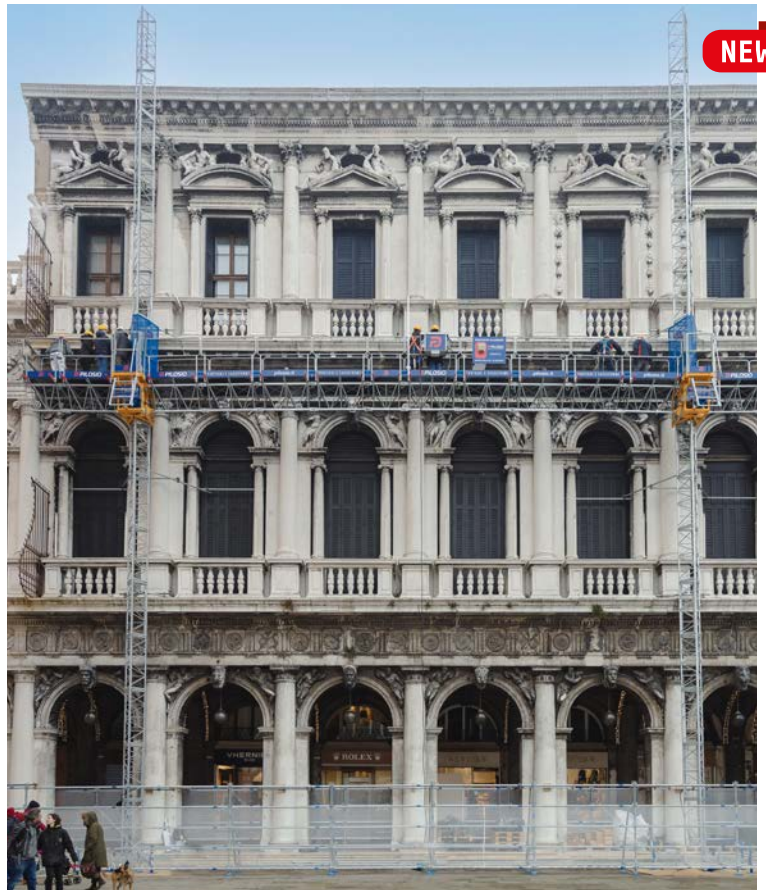
Ideal for facade works, modular both in height and length, the mast climbing work platforms can be either single or double column and allow a variety of works to be carried out: new constructions, renovations, maintenance, installation of cladding and facade works. They are also used in industrial maintenance and for interventions on bridges, viaducts, dams, towers, and chimneys.

The mast climbing work platforms can also be installed on sloped walls, buildings, or circular structures, and allow overcoming any protrusions, such as terraces and balconies, using special adjustable telescopic extensions available up to 2 meters in length.

The product is ergonomic for facade workers, quick and easy to install and disassemble, and has less impact on the facade thus suitable for historical centers.

The COSMOS model is the only mast climbing work platform that can be equipped with a landing ramp towards the area being worked on or towards the scaffolding.

Maximum dimensions		
Model	Single	Twin
ESI	8,8 m	26,6 m
	1000 kg	2800 kg
COSMOS	11,8 m	32,1 m
	1900 kg	3800 kg
ESA	15,2 m	35,90 m
	2280 kg	4100 kg





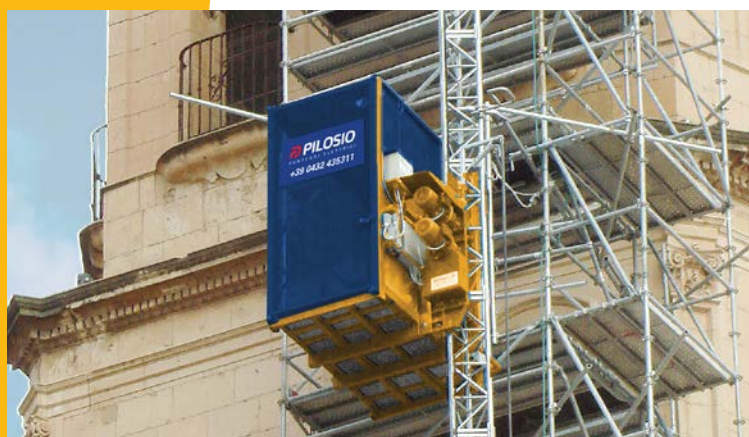


## CONSTRUCTION HOISTS

They represent the most efficient, most versatile and fastest vertical access solution for transferring people and materials to various floors in renovation, industrial, Oil&Gas, marine and port construction sites.

Including at significant heights thanks to the installation of doors at floor level. The main function is to quickly transport people and materials at height and can also be used as a rescue equipment.

Modello	Dimensioni/Portata
ESP 1000 Three-phase	2,0x1,10 m 1000 kg
ESP 1500 Three-phase	3,0x1,40 m 1500 kg



## TRANSPORT PLATFORMS

They represent an ideal vertical access solution for safely transporting both people and materials at height. They can be installed both outside the buildings and inside, fastened directly to the facade or to the fixed scaffolding, and are used in new constructions, renovations, and industrial maintenance. They have double speed and programmable floor stops with landing gates. Landing gates, and two or three access ramps.

Model	Dimensions/Loads
ESC 500 Single-phase	1,5x1,34 m 500 kg
ESC 500 Three-phase	1,5x1,34 m 500 kg
ESC 1000 Three-phase	1,8x1,40 m 1000 kg
ESC 1500 Three-phase	3,2x1,40 m 1500 kg



# VERTICAL FORMWORKS

## MINIMAG

A lightweight steel frame formwork, easy to move even manually. MINIMAG is a sturdy and flexible system, ideal for small and medium construction sites even without the use of a crane. Thanks to the available sizes, it can be used with few wooden planks. 60 kN/sqm pouring pressure.



## P300

P300 is a very versatile universal steel formwork system for construction sites with cranes. The technical characteristics of the system, its great flexibility and several accessories ensure efficient solutions for any type and size of project, from the simplest to the most complex ones. 60 kN/sqm pouring pressure for standard panels and 80 kN/sqm for columns.



## MAGNUM 2.0

A sturdy formwork for high casting pressures, movable by crane, ideal for large areas and high productivity. The connecting elements and accessories ensure easy assembly, fast set-up, and easy handling of large units by crane. 80 kN/sqm pouring pressure, 100 kN/sqm for columns.



## SVELT

A circular modular formwork with adjustable radius for casting curved walls. The system is completed by standard Pilosio system accessories such as sealers, service brackets and alignment clamps and can be combined with the P300 frame formwork.





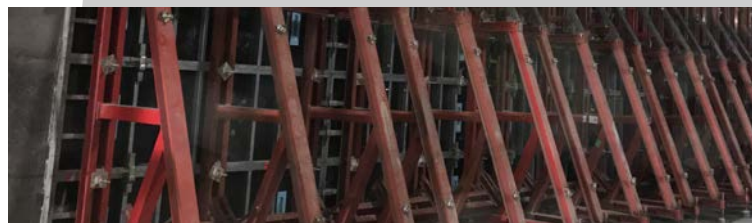
## MAXIMIX

A simple and very flexible beam formwork system for castings of any type. Its adaptability makes it possible to ensure any casting pressure. It meets every architectural need thanks to the freedom of composition and customization of the coating to create fair-faced concrete casting.



## SPECIAL APPLICATIONS

Pilosio designs and manufactures in-house tailor-made solutions to meet the needs of the most complex construction sites, offering optimal solutions when a traditional product is not cost-effective or cannot be used.



## SINGLE SIDED CASTING

Sturdy and simple steel contrast frames designed to be compatible with Pilosio's full range of formworks for vertical castings. Available in three different sizes to support castings from 3m to 8m high.



## SHAFT PLATFORM

A movable system for supporting formworks for vertical castings inside closed compartments. The platform can be quickly and easily lifted and repositioned by crane thanks to its support systems. The flexibility of the system allows covering areas of various dimensions.

## CLIMBING BRACKETS

240 climbing brackets for double-sided formwork. The movement by crane ensures smooth work cycles. PRG guided climbing bracket: a system always fastened to the rail and quickly repositioned by crane. A climbing system for TTD dams that can be used single and double-sided.





# HORIZONTAL FORMWORKS

## SLABFORM 2.0

A high-productivity and lightweight aluminum modular formwork system. The simple and intuitive assembly steps ensure fast and safe reinforcement operations. The early disassembly achieved with the drop head system allows optimization of the material needed on the construction site.



## LINEAR

A traditional system for casting ceilings with drop head suitable for any ceiling geometry. The full freedom to position the primary and secondary wood beams and steel supports ensures maximum flexibility. Possibility of choosing a counter-cast coat.



## ST50

A table that ensures particularly fast and safe work steps thanks to the rotating head that allows fast translations. The sizes can be customized to meet every construction site need to find the right balance between cost and productivity.



## ST80

A table made of reticular beams suitable for reinforcing large casting areas on construction sites with cranes. The disassembly system ensures high levels of productivity, and the translation reduces positioning time and the subsequent reinforcement stage.





## MP SUPPORT STRUCTURES

MP structures for supporting horizontal loads with shapes, heights and capacities created according to the needs of each project, ideal for various sectors such as industrial construction, bridges, and infrastructures.



## MP HD TOWERS

High-capacity modular towers made of MP multidirectional scaffolding components combined with special accessories. The MP HD towers are the ideal solution for a wide range of applications and can be combined to create heavy-duty towers of any size.



## SIMPLEX HD

A high-capacity, easy-to-assemble and efficient support tower for construction sites that can reach any height by combining 3 frame sizes. The tower can be assembled either vertically or horizontally and subsequently lifted and positioned by crane.



## TRENCH-LINING

### BOX SICURO

A lightweight shoring system installed already assembled with medium-power lifting equipment such as mini-excavators. For excavations up to 3.50 m depth with good soil consistency and pressure up to 22.50 kN/sq.m.



# ENTERTAINMENT

## STAGE

A stage with standard modules that can be combined as desired, with variable height and access stairs, guardrails with MP ledgers or specific elements. Walking surface with multilayer non-slip fire retardant planks cl. 1 or wooden beams and planks. MP side walls that can be connected to the stage for hooking motors for lifting the roof and sound systems. The walls can be darkened by sheets using aluminum rails.



## GRANDSTANDS AND BLEACHERS

Grandstands or bleachers consisting of an MP structure with steel step frames and metal walking surface of various sizes. They can be combined with an EVENT roof.

The steps of any length and depth are made of modular elements.

All structures are provided with safety guardrails and access stairs.



## SOUND AND LIGHT TOWERS

Modular MP towers for sound/light and direction freestanding or combined with a stage in various sizes and heights. High load capacity for any requirement. They can be protected by aluminum roofing and PVC tarpaulins and equipped with stairs.



## T74 T110 EVENT ROOFS

High-capacity flat modular roofing system with PVC tarpaulin for supporting light and sound systems, consisting of aluminum reticular beams 74 or 110 cm high, stiffening with braces and beams with quick connection to allow high load capacity over the entire surface. It is possible to manufacture cantilever roofs as well.





For more information, please visit our website **[www.pilosio.com](http://www.pilosio.com)** and browse the individual product documentation.

Pilosio reserves the right to make changes at any time and without notice for the technical improvement of the product.



**PILOSIO**  
PONTEGGI E CASSEFORME

 **PILOSIO**  
SCAFFOLDING & FORMWORKS

Pilosio Srl - Via E. Fermi, 45 - 33010 Feletto Umberto - Tavagnacco (UD) - Italy  
Tel. +39 0432 435311 - [www.pilosio.com](http://www.pilosio.com) - [info@pilosio.com](mailto:info@pilosio.com)